

## Tutorial 1: Modeling

**Finite dimensional MS:** We consider the mass spring of Figure (1).

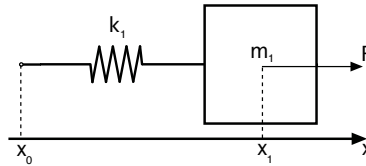


Figure 1: Mass spring system.

- What are the extensive variables characterizing this system ?
- Give the expression of the total energy as a function of the energy variables.
- Write the balance equations associated to this system.
- Give the port Hamiltonian representation of this system considering the external force at point 1 and the velocity at point 0 as inputs. What are the conjugated output ?

**Chain of MS:** We consider now the interconnexion of two MS systems as described in Figure 2.

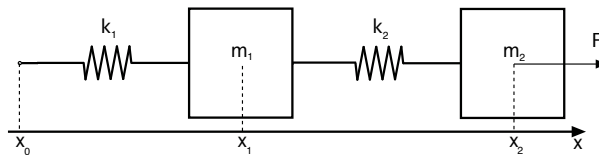


Figure 2: Interconnexion of MSD systems.

- Give the port Hamiltonian representation of each subsystem considering the same input/output than in the previous subsection.
- Write the interconnexion relations between the two subsystems.
- Give the port Hamiltonian representation of the overall system.

- Extend this representation to a n-elements chain.

**Longitudinal vibration of a beam:** We consider now the longitudinal deformation of a beam of length  $L$ .  $u(z, t)$  represents the deformation of the beam, with  $z$  the spatial variable,  $z \in [0, L]$ . The properties of the beam are defined by the distributed mass  $\rho$  and the Young modulus  $E$  ( $A$  is the cross section of the beam). The strain of the beam  $\varepsilon$  is defined by  $\varepsilon = \frac{\partial u}{\partial z}(z, t)$ . We consider the stress  $\sigma(z, t)$  depends linearly to the strain  $\sigma(z, t) = E\varepsilon(z, t)$ .

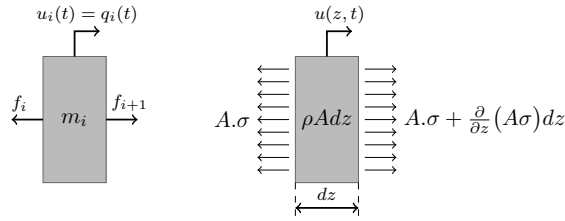


Figure 3: Local description of a beam.

- By analogy with the previous subsections, define the extensive variables associated with this system.
- Give the expression of the total energy of this system.
- Define the co-energy variables and deduce from the balance equations the port Hamiltonian representation of this system.
- Write the balance equation on the energy and the conditions associated with the skew symmetry of the differential operator.